



The Dryblower

December 2025

Cue's only dedicated news resource on what's happening in and around Cue.



The Dryblower

This community newsletter produced and distributed by the Cue Community Resource Centre. All editions are available in hard copy through listed distribution outlets and electronically on the Shire of Cue and Cue CRC websites.

DISTRIBUTION OUTLETS

Cue CRC
Shire of Cue
Tourist Park
Cue Roadhouse
Queen of the Murchison

ADVERTISEMENT COSTS

	<u>B & W</u>	<u>Colour</u>
Full Page	\$30.00	\$60.00
1/2 Page	\$15.00	\$30.00
1/4 Page	\$10.00	\$20.00

DISCLAIMER

The information and personal views in this publication do not necessarily reflect the views of the Cue CRC or its employees. No liability shall be incurred for any omissions or errors in published articles or contributions.

This publication is produced and published by the Cue CRC and any complaints should be directed to the CRC management.



CONTACT DETAILS

Cue CRC
72 Austin St, Cue WA 6640
PH: 08 9963 1198
E: info@cuecrc.net.au

The Dryblower

Unable to collect your copy of The Dryblower?

Fill in the form below and send it with your remittance.
Or phone or email the Cue CRC and we can organise
an invoice sent to you.

Name: _____

Address: _____

Subscription: _____ (\$28.80 yearly for post only)

CONTACT DETAILS

Cue CRC
72 Austin St, Cue WA 6640
PH: 08 9963 1198
E: info@cuecrc.net.au



Cue

Community Resource Centre

Your local connection

Cue CRC Report

Hello Cue,

How fast does the year fly by? It'll be Christmas in a few weeks. The Cue CRC is going to be open over the Christmas/New Year break with reduced hours. We will be closed on public holidays and Saturdays. We reopen to regular hours from the 5th of January 2026.

In November Cath Willet and I met with Minister Jarvis to discuss what we're doing at the CRC.

We also had our Annual General Meeting in November, we welcomed new committee members Marilyn Pratt, Jacquie Lacy & Michelle McIntosh. As usual a new Board we voted in. The Cue CRC Board members for 2025/2026 are Catherine Willett the Chairperson Richard Towell the Treasurer, Stephanie Wandek the Secretary and two directors Les Price and Monika Doepgen.

The Cue CRC will be having a Christmas Sale with up to 50% off selected items for a week in December. So come into the Cue CRC and grab a bargain from Monday 8th to Friday 12th December.

On behalf of the Cue CRC Staff and Committee, I would like to wish you all a safe and happy Christmas.

Julie Humphreys
Manager





Cue

Community Resource Centre

Your local connection

Christmas / New Year

OPENING HOURS



24th Dec
25th Dec
26th Dec
29th Dec
30th Dec
31st Dec
1st Jan
2nd Jan
5th Jan

9am - 4pm
CLOSED
CLOSED
10am - 2pm
10am - 2pm
10am - 2pm
CLOSED
CLOSED
9am - 4pm



\$25.00
each



Personalised *Santa Sack*

Add a personalised touch to your Christmas celebrations and order your kids a custom Santa Sack.

Santa Sack size: 60cm x 40cm



Come into the Cue CRC to order.

We will need preferred design number, your child's name and payment before we create the Santa Sack.

PLEASE NOTE: A limited amount of Santa Sacks are on order.



Gift ideas for the family.



Proudly supported by



Department of
Primary Industries and
Regional Development



Cue

Community Resource Centre

Your local connection

Christmas SALE

UP TO
50% OFF
SELECTED
ITEMS

from
Monday 8th
to
Friday 12th

Visit the Cue CRC
to find a great gift for
someone special.

For more info contact the Cue CRC on:
08 9963 1198
info@cuecrc.net.au

Proudly supported by

Department of
Primary Industries and
Regional Development

Come Celebrate Christmas with Us



Cue Community Christmas Party

4:30 pm start

Presentation by the Cue Primary School at 5:00pm

Followed by dinner at 5.30pm

Santa to arrive at 6:00pm

2025

DECEMBER

6

SATURDAY

CUE SHIRE HALL

From the CEO

November was a busy month.

Community Development Officer Forum - On Thursday, 20 November 2025, the Shire of Cue, in collaboration with the Mid West Development, proudly hosted the Community Development Officers Forum. The event was facilitated by Julian Canny, who guided discussions and activities designed to inspire collaboration and innovation across the region.

The forum brought together Community Development Officers from surrounding Shires, creating a valuable opportunity to share ideas, explore challenges, and highlight successful initiatives that strengthen local communities.

MEG Meeting - On Wednesday, 19 November 2025, the Shire of Cue facilitated the Murchison Executive Group meeting. This important gathering brought together CEOs from the surrounding Shires of Sandstone, Yalgoo, Mt Magnet, Meekatharra, and Murchison, alongside representatives from Regional Development Australia and the Mid West Development Commission.

The meeting provided a valuable forum for regional collaboration, with discussions focusing on shared challenges and opportunities across the Murchison region.

By hosting this meeting, Cue continues to play a central role in strengthening regional cooperation and ensuring that local voices contribute to broader strategies for growth, sustainability, and resilience.

Calcutta Cup - On Thursday, 20 November, in keeping with tradition, the Shire of Cue held the eighth running of the Cue Calcutta Cup. Attendees enjoyed the excitement of purchasing tickets for the chance to secure a horse in the phantom race.

Funds raised from ticket sales went directly to support the Cue St John Ambulance Sub Centre and the Royal Flying Doctor Service, ensuring these vital services continue to benefit our community.

A heartfelt thank you goes to Victory Metals, whose generous sponsorship greatly contributed to the success of the event.

Cue Parliament - On Friday, 21 November, the Shire of Cue proudly hosted the Murchison Country Zone meeting of the WA Local Government Association, affectionately known as *Cue Parliament*. Representatives from the Shires of Sandstone, Yalgoo, Mt Magnet, Meekatharra, and Murchison attended the meeting, which was held in the Council Chambers.

The session was officially opened by Shire of Murchison President Rosco Foulkes Taylor. We were honoured to welcome the Hon Jackie Jarvis MLC, Minister for Agriculture and Food; Fisheries; Forestry; Small Business; and the Mid West, who joined the proceedings.

Presentations were delivered by a range of agencies, including the Department of Fire and Emergency Services, Water Corporation, WA Country Health Service, Regional Development Australia, Southern Rangelands Pastoral Alliance, and the Midwest Development Commission, providing valuable updates and insights for the region.

The Western Australian Bank

At 12:00pm on Friday, 21 November 2025, the Hon Jackie Jarvis MLC, Minister for Agriculture and Food; Fisheries; Forestry; Small Business; and the Mid West, officially opened the Cue Café Kitchen Project, located alongside the historic Western Australian Bank building (formerly the Bank of NSW).

The opening ceremony was a proud moment for Cue, blending the town's rich heritage with its vision for the future. The Shire President Les Price addressed attendees with a speech highlighting the history of the bank, and the significance of revitalising such a landmark for community use.

This project was made possible through the State Government's Regional Economic Development Grants program, together with support from the Shire of Cue.

The Shire extends its gratitude to all who contributed to the project and looks forward to seeing the Cue Café Kitchen become a vibrant hub for community connection and hospitality.



Austin Street Heritage Project

Jason and Felicity Trevenen of Kaboom Toons have been busy this month bringing history back to life on Austin Street. As part of the Heritage Project, three new historically inspired shopfront signs have now been installed, reflecting businesses from Cue's early commercial days.

This initiative celebrates Cue's rich heritage while enhancing the town's appeal as a historical destination for residents and visitors alike.

Roadworks and Maintenance

Resheeting works have commenced on the Dalgaranga Road. Appropriate signage will be in place throughout the project.

We remind all road users to:

- Drive to the conditions
- Reduce speed

Follow all traffic management directions

For the latest updates on road conditions, please visit our website: www.cue.wa.gov.au/roadreport.

Rates Incentive Draw

At the Ordinary Council Meeting on Tuesday, 18 November 2025, the Shire of Cue conducted the annual Rates Incentive Prize Draw. This initiative is our way of thanking ratepayers who ensure their rates are paid on time, supporting the continued growth and sustainability of our community.

Congratulations to this year's winners:

- 1st Prize – *A98423 Elizabeth Houghton*
- 2nd Prize – *A9083 Cue Minerals Pty Ltd*
- 3rd Prize – *A4824 Frederick Loveridge*

All winners have been contacted by the Shire, and we extend our appreciation to every ratepayer who participated.

Remembrance Day Service

A Remembrance Day Service was held on Tuesday, 11 November 2025. The service was conducted by Cr Les Price and was well attended, with staff and children from Cue Primary School joining the community. We sincerely thank everyone who came along to pay their respects.

Verge Collection

The recent verge collection was a great success, and we extend our heartfelt thanks to everyone who took part. Your efforts in preparing and presenting items for collection helped keep our town tidy and ensured that reusable and recyclable materials were managed responsibly. This initiative not only supports waste reduction but also strengthens our sense of community pride.

WA Seniors Week

The Shire of Cue, in partnership with the Cue Community Resource Centre, was delighted to host a special **Seniors Week Morning Tea** on Friday 14 November. We extend our heartfelt thanks to all the seniors who attended and enjoyed the delicious morning tea.

Christmas Light Competition

It's that wonderful time of year again and the Christmas Light Competition is open for nominations. Full details can be found in this edition of *The Dryblower*. To take part, simply complete your registration form and return it to the Shire Administration Office by 12 December to ensure you're eligible for prizes.

Australia Day 2026

Preparations are well underway for Australia Day on Monday 26 January 2026, and this year's celebration promises to be another spectacular event filled with community spirit, live entertainment, and dazzling fireworks.

We are excited to announce that Geoff Udy will be providing entertainment on the night, adding to the festive atmosphere. The Shire of Cue will also be providing food and refreshments from 6.30pm, ensuring everyone can enjoy a relaxed evening together.

The night will conclude with a fireworks display, lighting up the sky in true Australia Day style.

We are proud to share that the Shire has once again been successful in securing grant funding through the National Australia Day Council, helping us deliver this special event for our community.

Community Reminders

- **Dog Owners:** Please ensure dogs are contained within your property or on a leash in public. The town oval is the only designated off-leash area. The Shire Ranger will act against unrestrained dogs.
- **Mosquito Fogging:** Will occur intermittently at dusk or early morning when conditions are suitable.
- **Cyclone Season:** As cyclone season is upon us, residents are reminded to secure loose items around their properties to reduce risks and keep our community safe.
- **Christmas Rubbish Collection:** Please note bins will be collected on Friday 26 /12/25

Upcoming Events

- **Saturday 6 December:** Town Christmas Party
- **Friday 12 December:** Christmas Light Competition Nominations Close
- **Tuesday 16 December:** Christmas Light Competition Judging
- **Thursday 18 December:** Shire Christmas Closure 12:00pm (reopening Monday 5 January 2026)

Next Ordinary Council Meeting
6.00pm, Tuesday 16 December 2025

GRAND OPENING

Bank of Western Australia



FRIDAY

21

NOVEMBER

2025

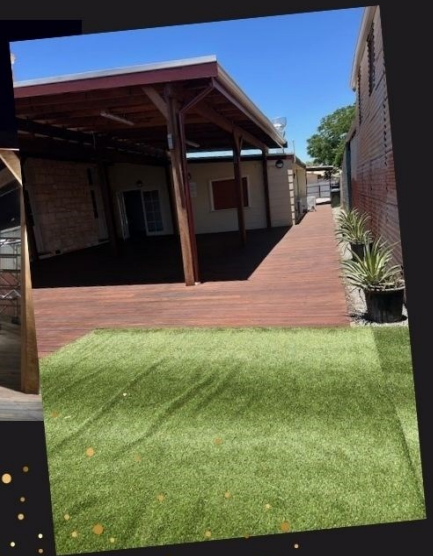


Bank of Western Australia



In early 2019, the Shire of Cue purchased the former Bank of Western Australia (originally the Bank of New South Wales), recognising its importance as an integral part of Cue's history. Since then, careful planning and restoration have transformed the building into a true masterpiece of heritage preservation.

Originally constructed in 1900, the building is now heritage-listed and stands proudly as a tourist attraction. Visitors can still see the original bank counters and vault, which remain intact as striking reminders of its past. Thanks to the dedication of Shire staff and local contractors, the Bank of WA has been revitalised and is emerging as a potential business venture. With support from the Department of Primary Industries and Regional Development and the Mid West Development Commission, funding was secured from the Regional Economic Development Grants Program for a fully equipped commercial kitchen—laying the foundation for a future café or restaurant. Hon Jackie Jarvis MLC officially opened the Bank of WA on Friday 21st November 2025 with a ribbon cutting along with Shire President Les Price and CEO Richard Towell.





**EC14411
L212001**

Access Electrical Contracting

ELECTRICAL & AIR CONDITIONING

PH: 0447 170 122

SERVICING MIDWEST — BASED IN CUE

admin@accesssec.com.au



PL9934 | GF6916 | BF7329

LEISK

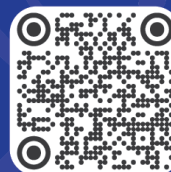
PLUMBING & GAS

RESIDENTIAL | COMMERCIAL | INDUSTRIAL | MINING

 **0416 307 843**

 **admin@leiskplumbingwa.com.au**

 **www.leiskplumbingwa.com.au**





We can collect from Shops, Businesses and Houses
We can connect freight from Perth on our other service
Booking Enquiries 0458274428
Or email gtmoverswa@gmail.com

SHIRE OF CUE

ROAD REPORT

Up to date road reports are on the
Shire of Cue website, link below:

cue.wa.gov.au/roadreport/

Council News

Hi 'Dryblower' Readers, Welcome to the December 2025 issue of the Cue 'Dryblower'. This year has flown by with Christmas only a few weeks away.

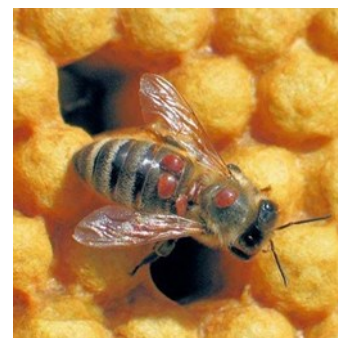
November was a particularly busy month culminating with the hosting of the Murchison Country Zone ('Cue Parliament') meeting and the official opening of the refurbished heritage Western Australian Bank.

November every two years is the time that Local Governments around the State get the opportunity to elect representatives to sit on the Western Australian Local Government Association ('WALGA') State Council. The Council is made up of 12 representatives from the country and 12 from the metropolitan area. The State Council meeting in Marh 2026 will see a new President and Deputy President elected for the next two years.

I attended WALGA's Environment Policy team Meeting on 5th November. Environment is a currently major focus of Governments around the world.

Some items under discussion included:-

- **Energy Transmission** and Community Benefit Framework.
- **Climate Change Advocacy Position.** Local Governments across the State will be asked for input around what impacts climate change is having on their communities.
- **Water Advocacy Position.** Water security is a major concern, and this scarce resource must be well managed.
- **Renewable Energy** is fast becoming a direction the current Federal Government driving change as we progress towards net zero and reducing reliance on fossil fuels.
- **H5 Avian Influenza.** A serious bird flu that is highly contagious. A National response with a State flavour is being developed. There is transmission from animal to human but not human to human. It's about readiness and preparedness.
- **Varroa Mite** is a tiny parasitic mite that attaches to honeybees and weakens or kills them. The mite was first detected in NSW in 2022 is now making its way around the country. WA remains Varroa-free and has strict border controls to keep it out however, the recent purchase of a beehive from Queensland by a keeper in South Australia now sees the mite in that State. The Nullarbor provides a good buffer zone for WA, but we are not immune from its spread.



WALGA also held its bi-monthly Information Forum on 5th November where the major topic of discussion was around renewable energy projects. The Information Forum is an interactive and informal briefing session and provides opportunity for State Councillors to be briefed on current activities and items of interest. There has been considerable discussion around renewable energy projects and windfarms which will result in the loss of prime agriculture land. A case in question is a number of proposed projects which will see in excess of 1,000 wind turbines across 100,000 hectares constructed in the Shires of West Arthur, Williams, Wagin and Narrogin. The 'Bellwether Wind Farm' alone proposes approximately 400 turbines.



There is much opposition to wind turbine renewable energy projects centred around native vegetation clearing, loss of prime agriculture land and production, impacts on the land and rehabilitation not to mention imposing visual changes to the landscape.

On 6th November State Council considered WALAGA's submission on the State Budget advocating for.

- Regional Road Safety Programs.
- Patient Assisted Travel Scheme fuel subsidy rate increase.
- Signalised Pedestrian Crossings.
- Expand the existing Community Emergency Services Manager (CESM) Program.
- Establishment of the Office of the Local Government Inspector.
- Increased funding for biosecurity incident and emergency management response activities.

11th November started off with a well-attended Remembrance Day Service at the Arthur Stanley Gurney ANZAC Memorial Park. Approximately 80 people and including students from the Cue Primary School attended.



Council held its monthly Information Forum on 11th November and discussed a number of items which included an update on the various projects and activities currently underway in the Shire. In the near future Council will consider a new entry statement for Cue along with proposals for the Masonic Lodge.

The Office of the Auditor General ('OAG') held an Audit Committee Chair Forum on 12th November to discuss issues and matters relevant to the upcoming Local Government Audit. The Shire of Cue has had an impeccable record having been nominated in the top 20 performing Shires for the last two years.

The Murchison Vermin Regional Council ('MRVC') CEO, Geoff Brooks and I attended a meeting with the Department of Planning Lands and Heritage ('DPLH') on 14th November to discuss the long overdue proposal to establish the MRVC as a Regional Subsidiary. The MRVC is a Regional Council and first registered in 1963 and it is Council's intention to explore the Regional Subsidiary avenue to reduce the costs associated with compliance and enable non council elected members to sit on the Subsidiary. So far the Department has not been particularly helpful and provided very little direction to enable a successful transition.

On 18th November the Selection Committee at WALGA considered a number of nominations the following positions:-

- Swan River Trust
- Geographical Names
- Local Health Authorities Analytical Committee

The names of the successful nominees have been given to the Minister for consideration and final sign off.

Council held its Ordinary Council Meeting on 18th November and considered the following items:-

- A full review of the Delegations Register.
- Accepting the tender for the facilities at the rear of the Masonic Lodge.
- Leasing of Unit 4, 28 Heydon Place Cue to a new business in town, Direct Heating and Cooling. Local Public notice of the lease arrangement between the Shire of Cue has been provided for your interest.
- Council also appointed elected members to sit on one or more of the Five (5) Committees associated with the responsibilities of the Shire as well as the appointment of two Councillors to sit on the MRVC.

Councillors were well represented at the annual Sundowner held at the Western Australian Bank Building on 20th November. This event is the precursor to the Murchison Country Zone ('Cue Parliament') meeting, which is hosted by the Shire of Cue and held the following day. The event gives Councillors and those who attend the opportunity to network with representatives from organisations like Regional Development Australia Mid-West Gascoyne, Barmingo, Fenix Resources Ltd, Newhaul, MLG, Westgold Resources Ltd, Victory Metals, Main Roads WA, Midwest-Gascoyne Region Central and Northern Regions Main Roads WA, Water Corporation, Mid-West Development Commission Board Members, David Price Consulting along with many others who attended the event.

With race caller David Price at the mic the event also saw the running of the 8th Cue Cup Calcutta which raised \$2,610 for the RFDS.



'Cue Parliament' (Murchison Country Zone of WALGA) held its meeting on 21st November with Representatives from our neighbour Regional Local Governments with Rossco Foulkes-Taylor from the Shire of Murchison and Les Price from the Shire of Cue voted as President and Deputy President respectively.



A highlight of the meeting was the official opening of the Western Australian Band Building by the Hon. Jackie Jarvis, Minister for small business and the Mid-West. Thanks also go to the Mid-West Development Commission for providing a Regional Economic Grant (RED's) of around \$80,000 for the purchase and installation of the new kitchen facilities.



On 28th November the CEO and I attended the Keep Australia Beautiful Council 'Tidy Town' awards at Optus Oval where Cue was selected as a finalist in the 'Heritage and Culture' section. Although we were unsuccessful it was a credit to the town to have been selected as a finalist in 2025.



Readers, please feel free to contact myself or any of the other Councillors if you have a matter you need to bring to the attention of Council and the Administration. Council is always looking to the community to provide input into the future direction of our town.

To everyone in our town have a safe and Merry Christmas and New Year and....until the 2026 edition of the Dryblower, it's goodbye for now!



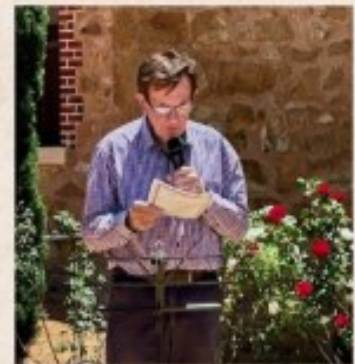
Shire President
Les Price

Remembrance Day 2025



At 11.00 am on 11 November 1918, the guns of the Western Front fell silent after more than four years of continuous war.

A wonderful turnout for this years' Remembrance Day, with the Cue School attending and many locals gathering to pay their respects to fallen soldiers.



lest we forget



CUE FITNESS CENTRE

!!!!RENEW YOUR MEMBERSHIP!!!!

**If your membership is due to run out in December
please renew it the first week of December.**

**The Shire office is on break from the
17th December until the 5th of January.
Renewal will not be available during this
time.**



53 Austin Street, Cue

Cafe
NOW OPEN

Tuesday to Sunday
8:00 AM - 4:00 PM

NOW IN STOCK

Fresh fruit & vegetables, dairy,
meat, milk, bread and more

Ph: 08 9963 1625

We thank you for your initial support of the cafe and look forward to providing an expanded range of necessary food products for your daily use.

Police Beat



Hello From Cue Police

As we approach the end of the year, it's a great time to reflect on the strength and resilience of our community. This year has shown us how much we can achieve when we work together, and I want to take this opportunity to express heartfelt gratitude to those who make Cue such a safe and supportive place.

A Big Thank You

First and foremost, thank you to Joe and Ian from our Police team. Your dedication, professionalism, and ongoing presence in Cue have been instrumental in keeping our community safe. The partnership between police and residents is something we value deeply, and we appreciate your continued engagement and responsiveness.

Secondly, a sincere thank you to the Cue Shire for your unwavering support and commitment to improving our town. Your efforts in maintaining services and infrastructure are vital to our community's wellbeing.

We also extend a **big thank you to Westgold** for their continued support and partnership with Cue Police. Your collaboration plays an important role in ensuring safety and sustainability in our region, and we look forward to strengthening this relationship in the year ahead.

A heartfelt **thank you to our emergency service volunteers**. Your time, energy, and dedication—often under challenging conditions—make a huge difference in keeping our community safe. Whether responding to incidents, assisting during emergencies, or supporting local initiatives, your contribution is invaluable.

Finally, **thank you to the residents of Cue** for your ongoing support, cooperation, and commitment to community safety. Your vigilance, communication, and willingness to work together help make Cue a safe and welcoming place for everyone.

Seasonal Reminders

- **Stay Safe in the Heat:** December brings extreme temperatures, so please take precautions. Stay hydrated, avoid unnecessary exposure during peak heat, and check in on elderly or vulnerable neighbours. Heat safety is everyone's responsibility.
- **School Holidays Are Here:** With the holidays approaching, we'll see more movement around town. Please remember to lock up your homes, sheds, and vehicles when unattended. Simple steps like securing property can prevent opportunistic crime and keep our community secure.

Our Focus This Month

The Cue Police Station remains firmly committed to ensuring the safety and wellbeing of our community and those travelling through our region. As part of our ongoing efforts, we continue to focus on three key areas: heavy haulage compliance, drug enforcement, and the prevention of theft.

Heavy Haulage: Safety on Our Roads

With increasing traffic from mining and transport operations, heavy haulage vehicles are a regular sight on our roads. Cue Police actively monitor these vehicles to ensure compliance with road safety regulations, fatigue management, and load limits. Our goal is to reduce the risk of serious accidents and keep our roads safe for all users — from local residents to long-haul drivers.

We work closely with Main Roads WA and other agencies to conduct roadside inspections and enforce standards. Drivers and operators are reminded to be mindful of fatigue, adhere to speed limits, and ensure vehicles are roadworthy at all times.

Drug Enforcement: Protecting Our Community

Drug-related harm continues to be a concern across regional WA. Cue Police are committed to disrupting the supply and use of illicit substances in our area. Through targeted patrols, intelligence-led operations, and community engagement, we aim to reduce the impact of drugs on individuals, families, and the broader community.

We encourage residents to report suspicious activity and assure you that all information is treated confidentially. Together, we can make Cue a safer and healthier place to live.

Theft Prevention: Securing What Matters

Theft — whether from campsites, businesses, or vehicles — can have a significant impact, especially in remote areas. Cue Police are increasing patrols and working with local stakeholders to prevent opportunistic crime. We urge everyone to secure valuables, lock vehicles, and report any suspicious behaviour promptly.

We also remind prospectors and travellers to take extra care with equipment and personal items, particularly when camping or working in isolated locations.

Working Together for a Safer Cue

Cue Police are here to support and protect our community. Whether it's on the roads, in town, or out in the bush, we're committed to proactive policing and community safety. If you have concerns or need assistance, please don't hesitate to contact us.

Army Visits Cue and Builds Strong Partnership with Local Police

Cue recently welcomed a visit from the Australian Army, marking an important step in fostering collaboration between military personnel and local law enforcement. The visit provided an opportunity for Cue Police and Army representatives to engage in joint discussions, share operational insights, and explore ways to support each other in regional security and emergency response.

The interaction laid the foundation for a strong relationship between the two forces. Both parties emphasised the importance of cooperation in remote communities, where resources can be limited and teamwork is essential for maintaining safety and resilience.

The visit showcased the Army's commitment to regional engagement and highlighted Cue Police's proactive approach to building partnerships that benefit the community. Future collaborations may include emergency preparedness planning and community outreach initiatives, ensuring that Cue remains well-supported in times of need.

Looking Ahead

As we move into the festive season, let's continue to look out for one another. Community safety is a shared responsibility, and together we can ensure Cue remains a safe, welcoming place for all.

Thank you again to everyone for your contributions throughout the year. Wishing you and your families a joyful, safe, and restful holiday season!

Stay safe,

Steve, Joe and Ian





Help us find you!!!

Hello Prospectors,

My name is Steve Page, and I'm the Sergeant at Cue Police Station. I'd like to share a few safety tips to help keep you safe while prospecting, and to assist us in locating you quickly if something goes wrong.

I know APLA and your own organisations already do a great job educating and preparing you for the bush, but here are a few additional suggestions from a policing perspective.

Before You Head Out

Make a clear plan with your partner, mate, cousin, or friend — and make sure you both understand it. That plan should include what to do **if one of you doesn't return to the car or camp**.

From our point of view, **if you're not back by dark and you haven't made contact**, you're considered lost. At that point, your friend or loved one will likely start asking questions and eventually contact police. Once that happens, we initiate a formal response — you're now classified as a **Person at Risk**, and we are obligated to find you.

We don't know if you're injured, had a medical emergency, or are simply disoriented — so we treat it seriously and begin search efforts immediately.

If You're Lost

If you find yourself in trouble, **you should have a PLB or EPIRB with you — not left in the car**. Here's what to do:

1. **Activate your beacon.**
2. **Light a fire** — it helps rescuers spot you from the air.
3. **Keep warm** — carry a space blanket or similar emergency gear.
4. **Stay with your vehicle if possible.** Wandering makes it harder to find you.

These simple steps can make a huge difference — they help us locate you faster and reduce the stress on your loved ones.

Wishing you all the best out there. Stay safe and happy prospecting!

Kind regards,
Steve Page
Sergeant, Cue Police Station



CHRISTMAS LIGHTS COMPETITION 2025

1ST PRIZE	\$400.00
2ND PRIZE	\$300.00
3RD PRIZE	\$200.00

'ENCOURAGEMENT' PRIZE OF \$100.00

REGISTRATION FORM

NAME:

ADDRESS:

PHONE NO:

*Please complete the form above and return
to the*

*Shire of Cue Administration Office
By Friday 12th December 2025.*

*Judging to take place Tuesday 16th
December 2025*



REMINDER

Rubbish collection
Christmas week
will be on
26/12/25
(Boxing Day)

Climate Cycles and God's Design:
Why Balance Matters
by Dran Reese
October 14, 2025

Article from "The New American" magazine: <https://thenewamerican.com/>

Link for the above article: <https://thenewamerican.com/opinion/climate-cycles-and-gods-design-why-balance-matters/>

For centuries, mankind has tried to predict, explain, and control the weather. From the *Farmers' Almanac* to modern satellites, we have always wanted to know what tomorrow will bring. History shows us the climate does change —it always has. Many parts of the world experience four distinct seasons: winter, spring, summer, and fall. The shifts of heat and cold, rain and drought, planting and harvest, are not man-made inventions, but natural cycles built into creation itself.

Today, "climate change" has become a phrase loaded with political and emotional weight. Some say the Earth is warming beyond repair. Others warn of cooling trends. Over the decades, predictions have swung back and forth — from the "global cooling" scares of the 1970s to the "global warming" warnings of the 1990s, and now to the broader phrase of "climate change." Scientists themselves disagree, often revising their warnings as new data comes in. Are we following sound science, or are we following fear?

Fear and Control

Human history is filled with predictions of catastrophic events — meteors, comets, even electromagnetic pulses from solar flares that could shut down civilization. Each of these warnings generates fear, and fear often leads to control. Governments and global organizations capitalize on that fear to justify spending trillions of taxpayer dollars on projects and policies that rarely produce lasting solutions.

Take, for example, the rise of ESG (Environmental, Social, and Governance) mandates. These programs force businesses to adopt policies that often have little to do with real stewardship of the Earth but much to do with centralizing control and funneling money. Instead of empowering citizens to innovate, governments impose regulations that create confusion and waste.

True Stewardship

This does not mean we should ignore responsibility. Stewardship of the Earth is a God-given duty. Simple, common-sense local laws — such as fines for littering — keep roadsides clean and prevent disease. Recycling programs, when practical, can reduce waste. Communities should avoid dumping toxins into rivers or soil, because such actions directly harm human and animal health. Keeping the air clean enough to breathe is not about controlling the global climate; it is about protecting life and practicing basic decency toward our neighbors.

But the idea that carbon dioxide emissions alone can fundamentally reshape the Earth's climate is not as clear-cut as activists claim. Particulate carbon in the air does affect quality of breathing, and we should find ways to filter and improve it — but declaring carbon dioxide as the singular villain behind hurricanes or forest fires oversimplifies creation's complexity.

Meanwhile, questions remain unaddressed. For instance, what about industrial practices that release toxins we rarely talk about? If the discussion is truly about health and stewardship, then all environmental threats should be part of the conversation — not only those that fit a political narrative.

God's Design

Perhaps the **greatest flaw** in today's climate debate is the absence of God from the discussion. Scripture reminds us that God is the Creator and Sustainer of the heavens and the Earth. Seasons were designed with purpose — seedtime and harvest, cold and heat, day and night will not cease as long as the Earth remains (Genesis 8:22). To ignore His hand in the cycles of nature is to miss the foundation of the conversation entirely.

Could it be that what we call "climate change" is simply the ongoing rhythm of God's creation? Could it be that shifting weather patterns are not signs of doom but reminders that we live in a dynamic, finely balanced system that has endured for millennia? While scientists argue about trends, God has already written stability into His creation. The Earth has endured ice ages and warm periods, droughts and floods, long before modern industrialization. It continues to do so today.

A Balanced Path Forward

So where does that leave us? Blind alarmism that predicts the end of the world within decades is neither productive nor accurate. But careless disregard for pollution and waste is equally wrong. The answer is balance. We should live responsibly, protecting the air, water, and land that sustains us. We should encourage innovation, allowing people — not bureaucracies — to find solutions. We should practice gratitude for the planet God has given us, rather than panic over doomsday forecasts.

Most of all, we should return to acknowledging God as the true Author of creation. The climate is not an enemy to be defeated, but a system to be respected, understood, and stewarded wisely. Fear and control will not save us. Faith, responsibility, and gratitude will.

In the end, climate change — whether warming, cooling, or simply cycling — should not lead us into despair. It should lead us to humility. The same God who gave us air to breathe, rain to nourish the soil, and seasons to guide our days is still in control. Our job is not to manipulate His creation through panic policies, but to care for it faithfully, trusting that He knows what He is doing.

LOGIC PUZZLE

		Islands					Richter Scale					Duration				
		Delest	Haruno	Lorak	Nenios	Wyseyld	8.1	8.3	8.4	8.9	9.1	41 seconds	52 seconds	58 seconds	97 seconds	99 seconds
Years	1926															
	1932															
	1938															
	1944															
	1950															
Duration	41 seconds															
	52 seconds															
	58 seconds															
	97 seconds															
	99 seconds															
Richter Scale	8.1															
	8.3															
	8.4															
	8.9															
	9.1															

CLUES

- The event with its epicentre at Delest had a rating of 9.1.
- The 9.1 quake occurred 6 years before the quake with its epicentre at Lorak.
- The event with its epicentre at Delest occurred 12 years after the 8.4 event.
- The quake that took place in 1944 didn't last for exactly 41 seconds.
- The quake with a duration of 52 seconds occurred 12 years after the earthquake with its epicentre at Delest.
- The earthquake with a duration of 99 seconds occurred 6 years before the quake with its epicentre at Haruno.
- The event with a duration of 52 seconds didn't have a rating of 8.9.
- The event with its epicentre at Lorak didn't have a rating of 8.9.
- Neither the earthquake with a duration of 52 seconds nor the 8.3 event was the event with its epicentre at Delest.
- Of the quake with a duration of 97 seconds and the event with a duration of 99 seconds, one had its epicentre at Wyseyld and the other had a rating of 9.1.

SUDOKU

1.

	2			3	1		4	
	3			7		5	9	
7	8	1	5					
				1	8		2	
	9	2	7					
1	4							
			3			1		
3					7			4
8	6				5	3	7	

2.

1	4		5				9	
6			4		3			
		5	2		8			
				2		9		1
			7			2	4	
	2	9					6	5
	5			3		1		
2		7						
4			6			5		9

JANUARY 26
AUSTRALIA
DAY



**Come celebrate our great town with
entertainment by Geoff Udy.
Food and refreshments provided by the
Shire of Cue at 6.30pm.
The night concluding with fireworks.
If you require any further information please
call the Shire of Cue 9963 8600**

 **TOWN OVAL** **START**
FROM 6.30PM



Australia Day

Reflect. Respect. Celebrate.



LIC #: AU7850
LIC #: LOI5254

Air Conditioning & Refrigeration Services

SALES INSTALLATION SERVICING



DaIKIN

For all your Air Conditioning
needs & spare parts.

M: 0420 103 414 or
E: decanfrosty@westnet.com.au

*Merry
Christmas!*

*and Happy
New Year!*



SHANE LOVE MLA

MEMBER FOR MID-WEST

📍 1/17 Moreton Tce, Dongara

☎ (08) 9927 2333

✉ Mid-West@mp.wa.gov.au

📍 20 Robinson St, Carnarvon

☎ (08) 9941 2999



St John



search St John Volunteer



Our volunteers are *Legends* And you can be one too!

Seeking Volunteer Support Officers

Help restock, tidy, support, and keep us running!

Benefits Include

Free ambulance cover, training, discounts, events, rewards, and recognition.



Want to find out more? Contact

0437 681 562

cue.subcentre@stjohnwa.com.au

NURSING POST

December 2025

RFDS:

Tuesday 9th

Dates were correct at time of print.
Please contact the Nursing Post to
confirm dates (08) 9963 0100.

EMERGENCY SERVICES

Fire & Rescue, Ambulance & Police

In case of emergency please call

000

November Answers

LOGIC PUZZLE

Orders	names	Flowers	locations
First	Jackie	Tulips	Figurine
Third	Nick	Poppies	Snow Globe
Fourth	Myles	Pansies	Magnet
Sixth	Cayden	Lilies	T-Shirt
Ninth	Maya	Violets	License Plate

SUDOKU PUZZLE

1.

5	6	9	1	4	3	2	7	8
2	4	1	6	7	8	3	9	5
8	7	3	9	5	2	4	1	6
6	9	2	7	8	4	5	3	1
4	3	8	5	9	1	7	6	2
1	5	7	2	3	6	9	8	4
7	8	6	4	2	9	1	5	3
3	2	5	8	1	7	6	4	9
9	1	4	3	6	5	8	2	7

2.

4	1	5	8	9	2	3	7	6
7	2	6	1	3	4	8	5	9
9	3	8	7	5	6	1	4	2
2	6	1	4	8	5	7	9	3
3	8	4	2	7	9	5	6	1
5	7	9	6	1	3	4	2	8
6	4	7	3	2	8	9	1	5
1	9	3	5	6	7	2	8	4
8	5	2	9	4	1	6	3	7

December

2025

SUNDAY	MONDAY	TUESDAY	WEDNESDAY	THURSDAY	FRIDAY	SATURDAY
	1	2	3	4	5	6
						Xmas Party
7	8	9	10	11	12	13
		RFDS			Xmas Lights Comp Ends	
14	15	16	17	18	19	20
	Council Meeting					
21	22	23	24	25	26	27
				Xmas Day	Boxing Day Rubbish Collection	
28	29	30	31			
			New Years Eve			



Cue

Community Resource Centre

Your local connection

OPENING HOURS

Monday to Friday
9:00am to 4:00pm

Saturday
9:00am to 12:00pm

Sunday & Public Holidays
CLOSED

PLEASE NOTE: Children must be accompanied by an adult
for admittance.
Pets not allowed.

Proudly supported by:



GOVERNMENT OF
WESTERN AUSTRALIA

Department of
**Primary Industries and
Regional Development**