

THE DRYBLOWER

October 2023



*Cue's only dedicated news resource on what's
happening in and around Cue.*



A not for profit community newsletter produced and distributed by the Cue CRC. All editions are available electronically via cuecrc.net.au or cue.wa.gov.au websites.

All contributions are due by the 25th for publication on the 1st.

DISTRIBUTION OUTLETS

- Cue CRC
- Bell&Co
- Shire of Cue
- Queen of The Murchison
- Cue Tourist Park
- Cue Roadhouse

ADVERTISEMENT PRICES

SIZE	B & W	COLOUR
Full page	\$30.00	\$60.00
1/2 page	\$15.00	\$30.00
1/4 page	\$10.00	\$20.00

DISCLAIMER

The information and personal views in this publication do not necessarily reflect views of the Cue CRC or its employees. No liability shall be incurred for any omissions or errors in published articles or contributions. This publication is produced and distributed by the Cue CRC and any complaints should be directed to the Cue CRC.

CONTACT DETAILS

Cue Community Resource Centre
 72 Austin Street, Cue WA 6640
 Ph: 08 9963 1198 E: info@cuecrc.net.au

Unable to collect your copy of the Dryblower?
 Fill in the form below and send in with your remittance.

NAME: _____

ADDRESS: _____

SUBSCRIPTION: _____ \$28.80 per year (this is for the cost postage only).

LETTER FROM A VISITOR

Dear Cue Community,

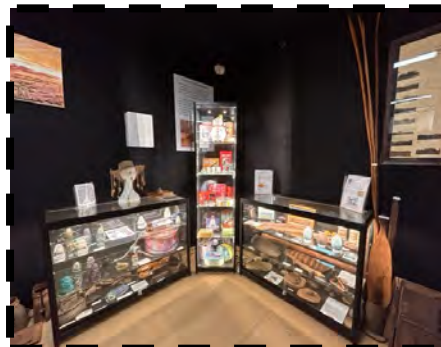
Recently, my husband and I were travelling with our friends who were visiting from The Netherlands. We visited Cue CRC and the Heritage Centre and met Sandra who gave us an excellent tour of the many historic items. Sandra knows the area well and is passionate about the collectibles which certainly added to the experience. We were impressed by the amount of personal items that added to the very interesting and eclectic collection representing a bygone era. Our Dutch friends were overawed and really enjoyed the variety of displays.

We always enjoy a stopover at Cue: from the accommodation at the Queen of the Murchison to the meals at the Murchison Hotel, the excellent photo display at the Shire and enjoyable visits to the Cuerosity Shoppe and The Emporium. This time we even saw the not-so-blue blue moon in a beautiful clear night sky :).

We understand how difficult it is to maintain these types of facilities so far away from the bigger cities and applaud the efforts to keep your town so well-presented. We highly recommend a visit to the Cue Heritage Centre for great insights into the past and the CRC for local tourist information. There is a lot more to see and do in and around Cue than you would first think.

Thank you Cue, we will visit again.

Alan and Jude Barnes,
Dalwallinu



CUE CRC

Hello Cue Community,

September was not as busy as previous months as the tourist season is coming to a close, although with over 500 visitors coming to the CRC, this is higher than last years numbers.

As usual, Department of Transport visited Cue on the 4th September. And although we didn't have anyone come in for craft group, we always have the conference room blocked off for those who would enjoy crafting at the CRC on a Wednesday morning..

For October Department of Transport will be at the CRC on Monday 2nd. Centrelink will be visiting the week beginning the 9th, unfortunately I don't have the exact date as yet, but please feel free to contact the CRC closer to the date.

We are doing a little Halloween thing this year—just bring your kids into the CRC for a Halloween Treat. Please remember kids need to be accompanied by an adult to enter the CRC.

Looking ahead into November we have booked Ashley Friesen to play at the Murchison Club Hotel on the 11th, it should be a good night. We hope to do a Twilight Markets in late November, keep your eye out for posters.

I took the week off work to attend Local Government Week in Perth with my fellow councillors, and I just want to thank my staff here at the CRC for holding down the fort. Without their assistance I wouldn't have been able to attend. And I'm glad I attended as there were some interesting and motivating speakers.

Julie Humphreys
Manager



CHC NEWS

The CHC has had a remarkable donation of a historic dryblower recently. This dryblower was designed to be portable and easily carried through bush in search of new alluvial ground. Originally, it was owned by Billy Johns. He was an old pioneer prospector who lived just behind the current Cue Caravan Park in the 1940s. Billy also had a large dryblower which was mounted on the back of his FJ Holden ute. Once Billy had found 'colour' with his mini machine he would use the large one to work his patch.

This tiny dryblower was bought from Billy for \$15.00 by Alan Barnes who was 8 years old at the time. Alan had borrowed the money from his father in 1965.... and still hasn't paid it back!! When he got the dryblower home and cleaned the dust off he found a tiny nugget wedged in the corner of the mesh. Alan still has that nugget, has cared for the dryblower ever since and recently returned it home to Cue.

Thank you, Alan. It is great to see local historical objects finding their way back here.

A BILLY JOHNS STORY as told by Alan Barnes.

One day Billy's mother sent him off to bring his father home from the goldfield for morning tea. On arrival, Billy saw a large nugget had wedged itself in the hopper of the dryblower and choked it from working fully.

Such was the honesty in the alluvial goldfields around Cue and Day Dawn in the 1940s that they went home for their cuppa leaving the nugget sitting in the top of the dryblower until after their break. It was still there when they returned later.



Sandra Box
Customer Service Officer



**cue HERITAGE
CENTRE**



2024 CUE CALENDAR PHOTO CONTEST

The Cue CRC is starting a new annual calendar competition.

We need 13 photos - 1 cover & 12 months.
Each person who gets their photo in the calendar will receive a free one, plus the cover photo winner will receive a gift card from the CRC.

Submit your photos via email to info@cuecrc.net.au by 19th October 2023 for your chance to be in the 2024 calendar.

ASHLEY FRIESEN



Saturday
11th
November
6.30 PM

MURCHISON CLUB HOTEL - CUE

FOR MORE INFO CONTACT THE CUE CRC:
PHONE: 08 9963 1198 or EMAIL: info@cuecrc.net.au

FROM THE CEO

With the weather warming up our Tourist season is showing signs of coming to an end. The Tourist Park has enjoyed a steady season and will now start to wind down towards the off season.

The Local Government Election which was to be held on the 21 October 2023 has been decided as we only received 4 nominations for 4 vacant positions.

The candidates elected unopposed are as follows;

District	Expiry of Term
PRICE, Les	16 October 2027
FITZPATRICK, Leonie	16 October 2027
HOGBEN, Ron	16 October 2027
MONTGOMERY, Neil	16 October 2027

The Shire will be holding an auction at the Cue Shire Hall on Wednesday 06 December 2023 at 12.00pm, for the sale of properties with three years or more outstanding rates in accordance with *section 6.64 of the Local Government Act 1995*. Further details are available on the Shire notice boards.

On Wednesday 06 September 2023 Gina Williams and Guy Ghouse performed at the Cue Shire Hall. Gina's stunning vocals accompanied by Guy's brilliant guitar skills transported us to a magical place through sharing stories and songs in Noongar language. Thank you to everyone that came along and to the Shire staff. Around 40 people attended the evening and the Shire provided beef and gravy rolls.

A number of Councillors, the Manager of Works and Services and I attended the WALGA annual Local Government Convention which included over 500 Elected Members and Local Government staff from across Western Australia to discuss and examine important issues and trends facing the sector, now and into the future. WA Premier the Hon. Roger Cook MLA officially opened the Convention and spoke of the strong partnerships between the State and Local Governments. West Australian's Chief Reporter Ben Harvey led a discussion with State Members of Parliament, Local Government Minister David Michael and Opposition Leader Shane Love, on the future of the Local Government sector.

This year's WALGA Convention featured an outdoor Supplier Showcase as part of the supporting program. This addition to the program provided a professional development opportunity for Local Government Staff to hear from expert speakers in the areas of Procurement, Construction, Energy and Traffic Management, and liaise with Preferred Supplier Panel members displaying a range of specialist products such as heavy-duty machinery, technology, and tools of the trade.

The Exhibition Showcase, sponsored by Civic Legal and the Department of Local Government, Sport and Cultural Industries featured 120 Suppliers and Exhibitors from the commercial sector.

The convention included the Mayors and Presidents Forum, Welcome Drinks and Local Government Awards, Heads of Agencies Breakfast, the WALGA Annual General Meeting, Gala Cocktail Function and Convention Breakfast with keynote speaker Michelle Payne.

I attended the opening of the new visitor hub at Wooleen station on Tuesday 26 September 2023. The opening was well attended with the building being officially opened by Regional Development Minister Don Punch and supported by grant funding through the Mid West Development Commissions' Regional Economic Development Grant program.

The owners of Wooleen Station have relocated and refurbished a 100-year-old shearer's shed kitchen and have transformed it into a reception, café and art studio. Originally situated 7km from the homestead, it's relocation to the entry of Wooleen Station provides another great stopping place and attraction in the Murchison.

Our Contract Environmental Health Officer Maurice Walsh is intending to be in Cue from Monday 02 October 2023 to Friday 06 October 2023. Please contact Maurice at eho@cue.wa.gov.au if you wish to make an appointment.

The Murdoch University Vet Program will be in Cue on Friday 27 October 2023. Students from the University will be providing free pet checks and sterilisation under the guidance of a senior veterinarian. Other services available include microchipping and vaccination at the owner's expense. Please note this service is provided by the Shire of Cue and is only for dogs and cats registered with the Shire. Bookings are essential and can be made through the Shire office.

Nominations for the Australia Day Active Citizenship Award are now open. If you are aware of a Community Member or Group who has made a significant contribution to the Cue Community and you would like to see them acknowledged, nomination forms can be collected from the Shire office. Nominations close on Tuesday 31 October 2023. Preparations are underway for Australia Day 2024, and it is looking to be another spectacular event with live music and fireworks. More details will be provided closer to the event.

Just a reminder to ratepayers if your rates are paid in full before 05 October 2023 you will go into the draw to win one of three cash prizes being:

- First Prize \$600.00
- Second Prize \$300.00
- Third Prize \$100.00

The draw will be held at the November Council meeting.

As a reminder, there are still a number of Shire roads waiting for repair works to commence. Road users are asked to take care when travelling, particularly at flood crossings. Please drive to the road conditions and observe any traffic directions. Road Condition Reports are available on the Shire of Cue's website, the Public Notice board and on our Facebook page.

Dog owners are reminded of their obligations to keep their dogs contained within the boundaries of their property or on a leash while walking. Please be considerate of others as it can be quite confronting to be approached by an unknown dog while out walking. The Shire Ranger visits the area frequently and will take action against unrestrained dogs in public places. This may result in a financial penalty to the owner and potential destruction of offending animals. The only authorised area within the townsite where dogs are permitted to be exercised off-leash is the town oval. It is your responsibility to control and look after your pets.

With summer only a couple of months away, we need to start preparing for the potential of storms and cyclones. Residents are reminded to clean up and remove any unwanted or loose items from their property that could cause damage in a storm. The Shire will announce a date soon for a Bulk Rubbish collection. Larger items can be collected by contacting the Manager of Works and Services to make arrangements.

Mosquitos are starting to present themselves again and the Shire of Cue has commenced fogging operations when weather conditions allow. Residents are asked to check their properties and remove any potential mosquito breeding areas, by emptying containers holding water, ensuring gutters are not holding water and checking yards for areas that hold water.

We ask everyone to be vigilant as the warmer weather brings out the snakes in and around town, which means they are out of hibernation and active again. Please use caution when out walking. Keeping grass short and cleaning up around the yard will help to keep them away.

Upcoming events:

- Murdoch University Vet Program – Friday 27 October 2023
- Remembrance Day – Saturday 11 November 2023
- Auction Wednesday 6 December 2023 @ 12.00pm (see item above)

Richard Towell
Chief Executive Officer, Shire of Cue

Next Ordinary Council meeting – 6.00pm Tuesday 17 October 2023
Special Council Meeting – 6.00pm Tuesday 24 October 2023. (A Swearing in ceremony will take place at 5.30pm, prior to the Special Council meeting)



**LOCAL GOVERNMENT ORDINARY POSTAL ELECTION
NOTICE OF RESULTS
Shire of Cue**

The result of the Ordinary Election conducted as a postal vote on Saturday, 21 October 2023 is as follows:

CANDIDATES ELECTED UNOPPOSED

District	Expiry of Term
PRICE, Les	16 October 2027
FITZPATRICK, Leonie	16 October 2027
HOGBEN, Ron	16 October 2027
MONTGOMERY, Neil	16 October 2027

Leslie Matthew PRICE is elected as Councillor for the Shire of Cue and will hold office until 16 October 2027.

Leonie Cheryl FITZPATRICK is elected as Councillor for the Shire of Cue and will hold office until 16 October 2027.

Ron HOGBEN is elected as Councillor for the Shire of Cue and will hold office until 16 October 2027.

Neil Andrew Gray MONTGOMERY is elected as Councillor for the Shire of Cue and will hold office until 16 October 2027.

Stephanie WANDEK
RETURNING OFFICER
0475 457 938



**WESTERN AUSTRALIAN
Electoral Commission**



PUBLIC NOTICE OF SPECIAL MEETING

24 October 2023

NOTICE OF MEETING

A Special Meeting of the Shire of Cue

To be held on 24 October 2023

**in the Council Chambers at 73 Austin Street, Cue
commencing at 6.00pm**

The purpose of the Meeting is to consider the following items:

- 1. Election of President**
- 2. Election of Deputy President**
- 3. Committees of Council Representation**

**Please note: This meeting will be preceded by a swearing in
Ceremony.**

Richard Towell

Chief Executive Officer



PUBLIC NOTICE

Shire of Cue 2024 Council Meeting Dates

It is advertised that under the *Local Government (Administration) Regulations 1996* Local Governments are required to adopt annual meeting dates and advertise them to the community. As such it was resolved at the Ordinary Meeting of Council held on 12 September 2023 the following Council meeting dates for 2024.

January	No Meeting
February	Tuesday the 20th
March	Tuesday the 19th
April	Tuesday the 16th
May	Tuesday the 21st
June	Tuesday the 18th
July	Tuesday the 16th
August	Tuesday the 20th
September	Tuesday the 17th
October	Tuesday the 15th
November	Tuesday the 19th
December	Tuesday the 17th

Meetings will commence at 6.00pm

Richard Towell
Chief Executive Officer



WESTGOLD
RESOURCES LIMITED



Life as a vacation student with Westgold Resources

Hi, I'm Giulia, a student in Environmental Management at Murdoch University. I joined Westgold's vacation program as a student environmental advisor where I'm learning about environmental management in the mining sector.

This includes understanding environmental regulations, conducting impact assessments, and implementing mitigation measures. My experience has practical knowledge that will be valuable in my future career.

What does an Environmental Advisor do?

An Environmental Advisor in the mining sector plays a pivotal role in safeguarding the environment by ensuring mining operations are conducted in compliance with regulations, assessing environmental impacts, and promoting sustainable practices in the industry. Their work is crucial in balancing the economic benefits of mining with the need to protect natural ecosystems and the well-being of surrounding communities.

Skills gained

Being an environmental vacation student in the mining industry can be both challenging and rewarding. You'll witness firsthand the environmental impact of mining operations. This includes observing how mining activities affect ecosystems, water quality, air quality and local communities. This exposure can deepen your understanding of the challenges and responsibilities of environmental advisors in mining.

You'll have hands-on experience conducting fieldwork such as environmental condition assessments, data collection and operation monitoring. You'll have the opportunity to participate in problem solving, be part of a supportive team, learn about regulatory compliance and community engagement.

Working at Westgold is a stepping-stone to a rewarding career in environmental management in the mining industry.

Westgold's Summer Vacation Program

Westgold offers invaluable practical experience in an active mining environment. Drawing from students' personal interests and motivations, Westgold provides a unique learning experience for students currently studying metallurgy, mining engineering, geology, surveying, environment sciences and human resources.

Westgold is currently seeking enthusiastic university students in their second or penultimate year of study to take part in its Summer Vacation Program. Running from December to February, you could gain hands-on experience with a dynamic, growth-oriented West Australian gold producer.

If you are interested, please apply now via our website: westgold.com.au

CUE MEMORIAL WALK MONDAY 16TH OCTOBER 2023

So many lives have been touched by suicide.

Come join us for a walk around town and then share a meal and memories at Victoria Street Park (across from the Nursing Post)

**9.30 - 10.30 At the Cue Shire Hall
QPR (Question, Persuade, Refer)
45 min Education program**

**Followed by a walk around the town of Cue,
stopping at the Blue Tree.**

**Then back to Victoria Street Park for a Community
BBQ.**

**Please phone Tracy if you have any questions.
9963 8600**



Agent

At a Services Australia Agent you can:

-  use our computer to access my.gov.au and other government programs and services and to search for jobs
-  use the telephone to access our self service options or speak to us
-  access free Wi-Fi 24/7 to connect to government services. No password required
-  scan, fax and photocopy documents
-  have your confirmation of identity documents certified
-  lodge forms or pick up brochures.

Agents can:

- respond to general questions on payments and services
- show you a quick and easy way to do your business using self service
- help you complete forms and other paperwork, and
- arrange referrals to specialist services.

Agents can't:

- make, review, assess or vary your payments, or
- issue Electronic Banking Transfers (EBTs), concession or Medicare cards.

Agents aren't Services Australia staff.

Your local Agent is:

Cue Community Resource Centre

Address:

72 Austin Street

Cue WA 8640

Hours of business:

Monday to Friday

9.00am to 4.00pm

To find other Agent locations go to servicesaustralia.gov.au

Self service

You can use your myGov account to access your Centrelink, Medicare and Child Support online accounts. Go to my.gov.au

You can also access our services through the Express Plus mobile apps.

For more information go to servicesaustralia.gov.au/selfservice

Centrelink phone self service

Phone self service	136 240
To report your income and changes to your circumstances	133 276

How to contact us

Go to servicesaustralia.gov.au for more information about payments and services or call the listed '13' or '1800' number most relevant to your situation.

ABSTUDY	Freecall™ 1800 132 317
Assistance for Isolated Children	132 318
BasicsCard balance enquiry	Freecall™ 1800 057 111
Centrelink debt repayment	Freecall™ 1800 076 072
Child Support	131 272
Disability, Sickness and Carers	132 717
Families	136 150
Farmers and their partners	132 316
Financial Information Service	132 300

For information in other languages:

• Centrelink	131 202
• Medicare and Child Support	131 450
Grandparent Advisers	Freecall™ 1800 245 965
Income Management and BasicsCard	Freecall™ 1800 132 594
Indigenous Call Centre	Freecall™ 1800 136 380
Indigenous debt repayment	Freecall™ 1800 138 193
Job seekers	132 850
Low Income Health Care Card	132 490
Medicare	132 011
Medicare Aboriginal and Torres Strait Islander Access Line	Freecall™ 1800 556 955
National Redress Scheme	Freecall™ 1800 737 377
Older Australians	132 300
Students and trainees	132 490
TTY* enquiries	Freecall™ 1800 810 586
Complaints and feedback	Freecall™ 1800 132 468

Call costs from your home phone to a:

- **13 number** from anywhere in Australia may vary depending on the call plan you have chosen from your telephone service provider—mobiles may incur a higher charge.
- **1800 number (Freecall™)** are free—calls from a public phone and mobiles may be timed and charged at a higher rate.

* TTY is only for people who are deaf or have a hearing or speech impairment. A TTY phone is required for this service.



Australian Government
Services Australia



servicesaustralia.gov.au

MURDOCH UNIVERSITY STERILISATION PROGRAM

Veterinary students from Murdoch University under the guidance of a senior veterinarian will be travelling to the Shire of Cue to perform sterilisations, pet checks and micro chipping for registered dogs and cats in the Shire of Cue.

DATE: Friday 27 October 2023

TIME: Friday from 8:30am – 5:00pm

VENUE: Cue Town Hall



VACCINATION COSTS

Vaccinations are free for pets being sterilised

\$30 for Concession card holders

\$50 for Non Concession card Holders

Murdoch students will carry out sterilisation and pet checks for **cats and dogs free of charge** to residents of Cue. Registrations are to be paid for by the owner prior to surgery or on the day and a registration tag will be issued.

EFTPOS available on the day, cash welcome.

Please contact the Shire by 9 October 2023 if you are interested in having your pet sterilised and micro chipped.

There are limited sterilisation opportunities available.

For further information please call the Shire office on 99638600

NOTE:

ALL cats must be sterilised, Micro chipped and registered.

ALL dogs must be micro chipped and registered by 1 November 2023.



CUE SCHOOL

RESILIENCE: RESPECT: RESPONSIBILITY

Term 4 is upon us and we are gearing up for a big one. We are currently working on a few school improvement projects and hope you can come and celebrate with us when completed. Our Year 3-6 classroom is being refurbished with a fresh coat of paint, new furniture and fittings, interactive TV. We have been so lucky to be able to engage locals to complete this work for us and will post some finished photos soon.



Our students planted twenty Lilli Pilli's to help beautify our entrance and we expanding our gardening area with fruit trees, hopefully we can get our chickens back once fenced.

The rear of the school has also seen some action with Krueger Contracting donating and transporting some Tuart and Jarrah logs for our yarning circle. Mal Taylor (with thanks to the shire) then unloaded them and placed them for us. We are looking for someone to do some carving, if you know of someone, please contact us. We plan to plant bush tucker plants as well as shade to make this area an outdoor classroom and community meeting point.



At the end of last term, Mr & Mrs M took Room 2 on camp to the Mt Gibson Animal Sanctuary between Payne's Find and Wubin. While there we learnt about animals and tracking them and to clear our campsite every night so we can see what has visited us overnight. We went exploring to the massive Lake Moore where there is a pathway all the way to Wiluna .



We saw the weird Mushroom rocks formed by water flow.



We were also taken to an Aboriginal site called Red Hands where we saw painted hands using the ochre from Wilgie Mia near Cue.



The highlight of the trip was the night spotlighting in the 7800 hectare fenced protective area where we saw Woylies and Bilbies. Unfortunately we didn't see the phascogale, Stick Nest



Last term we also went to Garden Rock to explore. It is so wonderful to have such an amazing place so close to town. We found tracks for milyura, bungarra, marlu and lots of donkey scat.



WA HAS THE LOWEST PATS FUEL SUBSIDY IN AUSTRALIA




Help improve the Patient Assisted Travel Scheme (PATS) for regional West Australians. The Petition calls for improvements in six key areas of PATS:


- Increased fuel subsidies.
- Increased accommodation subsidies.
- Providing taxi vouchers to allow patients to get to and from medical appointments.
- Improving processing and reimbursement times for patients.
- Expanding PATs to also include dental and allied health services.
- Providing greater recognition and support for patient escorts and carers.



Merome Beard MLA
Member for North West Central

 [facebook.com/MeromeBeardMP](https://www.facebook.com/MeromeBeardMP)

 northwest@mp.wa.gov.au

 08 9941 2999

Authorised by M Beard, 20 Rockpool Street, Cannan WA 6101



FREE DRIVING LESSONS

Want to learn to drive? need a to reach your log book hours?

Yulella has a qualified driving instructor who can teach you how do drive and reach your log book hours.

For anybody aged 16+

Manual or Auto

We can also assist with ID, Learners, and theory practice!



**MEEKATHARRA
MT MAGNET
CUE**



**Call Gill to register:
0458 695 317**



Stellar Stargazing

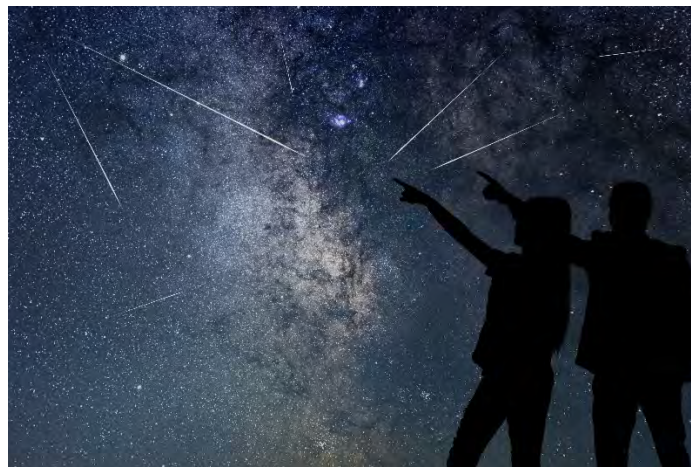
October is a great month to be out under the stars! Jupiter and the Moon appear together, there's a meteor shower plus Halloween to celebrate!

A great time to see Jupiter is after 9.30pm on the 2nd October. Jupiter will rise in the north east with the almost full moon rising below it just 10 minutes later. The pair will be bright and stunning!

This year the Orionids Meteor Shower will have almost perfect viewing conditions. Stargazers can expect to see up to 20 meteors per hour. The Orionids Meteor Shower is generated from Halley's Comet and peaks on the night of the 21st/22nd of October but can be viewed several days either side of the peak. The best views will be after 1am when the quarter Moon has set and the sky gets darker.

When to look: From midnight/1am to early morning, 21st/22nd October

Which direction to look: Toward the northern horizon.



Will you be trick or treating this Halloween? If you are, from sunset onwards keep an eye out for the gas giants! Jupiter will rise in the northeast, appearing as a bright star. Saturn will be overhead, as a slightly dimmer looking bright star. Happy stargazing!

By: Donna Vanzetti and Carol Redford, Astrotourism WA

www.astrotourismwa.com.au



**Are you
looking for
a support
provider?**



**My Supports is now
servicing the Mid West
Region!**

Daily living -
Community Participation -
Capacity & Skill Building -
Support coordination -
Individualised Living -
Options

Get in touch!

***Register your interest by phoning 1300 184 663
or by emailing info@mysupports.com.au***

Our website address is www.mysupports.com.au



EC14411



Access Electrical Contracting

Licensed Electrician

PH: 0447 170 122

SERVICING MIDWEST — BASED IN CUE
MINING | INDUSTRIAL | COMMERCIAL | DOMESTIC

admin@accesssec.com.au

PL9934 | GF6916 | BF7329



PLUMBING & GAS

SERVICING MID WEST & GOLDFIELDS REGIONS

MINING | COMMERCIAL | RESIDENTIAL | INDUSTRIAL

24/7 EMERGENCY

PH : 0416 307 843 | ADMIN@LEISKHYDRAULICS.COM.AU

BELL & CO (EMPORIUM) LIQUOR—GROCERIES



49 Austin St, Cue W.A. 6640

OWNER /MANAGERS
Ross & Pix Pigdon

Shop Hours

Monday—Friday: 9 am — 1.00 pm
Monday—Friday: 3.30pm — 6.00 pm
Saturday: 9 am — 12.00pm
Sunday: Closed
Public Holidays: to be advised

Agents For:

All Evaporative Air Conditioning Parts
Coerco Water Tanks & Agriculture Products
Mt Magnet Meats
Toll Ipec
Firearms Dealer

Phone: 08 99631012
Fax: 08 99631370
Pix Mobile: 0428508090
Mobile: 0427864165 (Toll Ipec)
email: bellcoptyltd@bigpond.com.au

**MOUNT MAGNET
MEATS**



**The only FRESH PRODUCE
BUTCHER in the Mid West**

Open
Monday - Friday
9am - 5pm
&
Saturday
9am - 12pm

76 Hepburn St (Main Street) Phone / Fax 9963 4195


*Pleased to meet you
with meat to please you*

Your voice in the WA Labor Government




Peter Foster MLC

MEMBER FOR MINING AND PASTORAL REGION

 peter.foster@mp.wa.gov.au

 [PeterFosterMLC](https://www.facebook.com/PeterFosterMLC)

 (08) 9144 4187

Authorised by P. Foster, 49/5 Sharpe Avenue, Karratha, WA 6714



Department of Transport Remote Services

Visiting: Cue CRC

When: Monday, 2nd October, 1pm to 3pm

Where: 72 Austin Street, Cue WA 6640

We will be able to help you with the following services:

- theory test
- photo card applications
- driver's licence applications
- change of address
- registration and driver's licence renewals
- vehicle transfers
- return of vehicle plates
- driving assessments

To enable us to help you, please ensure you bring your birth certificate, Medicare card, bank card and two types of proof of residency, along with cash or card for payment.

For enquiries please call: Karen - 9216 8194

Swap queue time, for you time



Online services
available 24/7

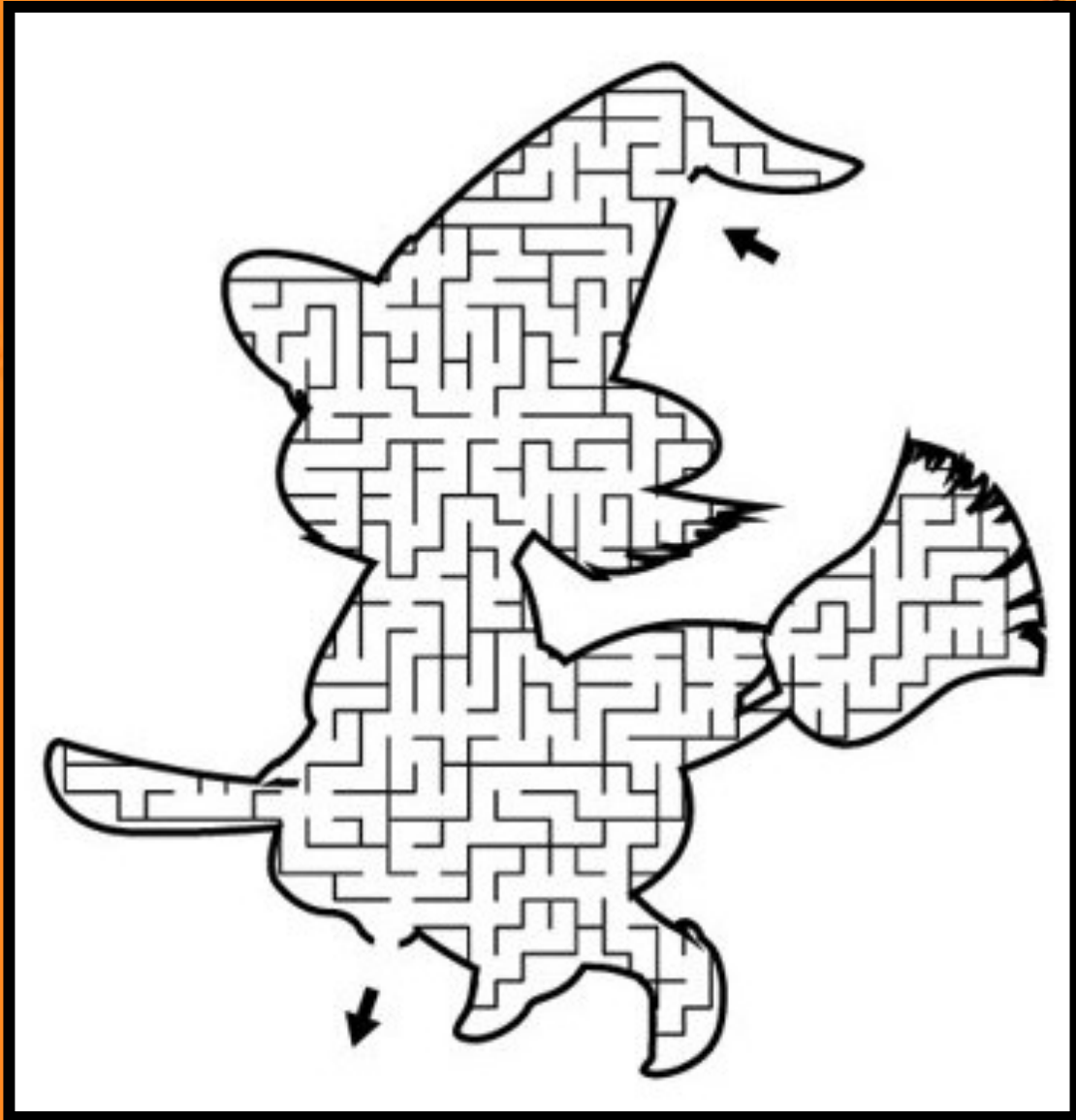
Sign up to DoTDirect online services for around the clock services, payments, and applications, to manage your personal details, and more.

www.transport.wa.gov.au/dotdirect

DoTDirect

KIDS PAGES





**COME DOWN TO THE CRC
AFTER SCHOOL ON THE 31ST
FOR A HALLOWEEN TREAT!**





Quality Seafood delivered to your door

Ordering is easy!

Email - coral@westcoastseafood.com.au

Phone - Coral - 0407 424 435

Shop online - westcoastseafood.com.au

Prices effective from June 2023



FISH FILLETS-CUTLETS-WHOLE FISH

Smoked Cod (South Africa)	1kg	\$24.00
Royal Bassa (Pacific Dory) (China)	1kg	\$25.00
Southern Ocean Hake (Australia & NZ)	1kg	\$26.00
Whiting Southern (New Zealand)	1kg	\$26.00
Sweetlip Hoki (New Zealand)	1kg	\$26.00
Flathead Fillets - (Queensland)	1kg	\$31.00
Red Spot Emperor - (Thailand)	1kg	\$36.00
Mackeral Cutlets (West Australian)	1kg	\$38.00
Atlantic Cod (Norwegian)	1kg	\$41.00
Pearl Perch (Queensland)	1kg	\$44.00
Grouper	1kg	\$41.00
Gold Band Snapper (Onslow WA)	1kg	\$47.00
Tuna Steaks (South Australian)	1kg	\$47.00
Barramundi Portions (Kimberley Aust)	1kg	\$51.00
Salmon Portions - UNGRADED (Norway)	1kg	\$51.00
Barramundi Fillets	1kg	\$36.00
Red Emperor (Onslow WA)	1kg	\$57.00
Salmon Portions - Premium (Norway)	1kg	\$57.00

HEAT & EAT MEALS & SNACKS

Family Pies (Beef, Chicken & Leek)	850g	\$20.00
Quiche - (Spinach & Feta)	900g	\$20.00
Pizza (Hawaiian, BBQ Chicken, Supreme)	ea	\$20.00
Chicken Breast Nuggets	1kg	\$25.00
Chicken Wings & Drums (Mild or spicy)	900g	\$25.00
Chicken Sweet Chilli Tenders	800g	\$25.00
Meat Balls (Aussie BBQ)	1kg	\$25.00
Chicken Meat Roasted	1kg	\$25.00
Mini Spring Rolls - Vegetable	900g	\$27.00
Gourmet Beef Burgers (New Zealand)	1kg	\$27.00

LENARDS CHICKEN

Jumbo Chicken Burgers (8 on a tray)	1kg	\$27.00
Mignons (4 tray)	4pk	\$27.00
Enchiladas (4 tray)	1kg	\$29.00
Marinated Chicken Skewers (10 tray)	10pk	\$29.00
Garlic & Herb Schnitzel (4 tray)	1kg	\$31.00
Rolled Roast - Honey Mac or Cheese & Bacon	1kg	\$31.00
Chicken Kiev's (Breast - 4 tray)	4pk	\$32.00

PRAWNS

Marinated Prawn Meat (Garlic or Chilli) (Aust)	500g	\$28.00
Garlic Prawn Skewers (10 pk) (Thailand)	500gr	\$32.00
Cooked Exmouth Endeavours (West Aust)	1kg	\$33.00
Raw Northern King (West Aust)	1kg	\$33.00
Large Cooked King Prawns (West Aust)	1kg	\$51.00
XLarge Raw Prawn Meat (Aust & Thailand)	1kg	\$51.00
XLarge Cooked Prawn Meat (Thailand)	1kg	\$51.00
XL Raw King Prawns (West Aust)	1kg	\$51.00
Shark Bay Prawn Meat (West Aust)	1kg	\$67.00

MISC SEAFOOD

Mussels Whole (New Zealand)	1kg	\$14.00
Chilli Squid Rings (New Zealand)	500g	\$20.00
NZ Littleneck Clams (New Zealand)	1kg	\$24.00
Raw Crab Meat (Shark Bay WA)	200g	\$24.00
Seafood Marinara (Thailand)	1kg	\$24.00
Squid Tubes (New Zealand)	1kg	\$28.00
Mussel Meat (New Zealand)	1kg	\$30.00
BBQ Combination Pack	1kg	\$31.00

(prawns, fish, squid, scallops, mussels, feeds 4)

Oysters 1/2 shell (New Zealand - South Island)	1doz	\$31.00
Scallop Meat (Tasmanian)	500g	\$37.00
Moreton Bay Bug MEAT (Queensland)	500g	\$42.00
Crayfish - vary in size 450-600gr	aver	\$37.00ea
Kinna	170gm	\$35.00

CRUMBED SEAFOOD

Fish Nuggets (New Zealand)	1kg	\$25.00
Crumbed Fish Fillets(10 fish) (New Zealand)	1kg	\$25.00
Crumbed Squid Rings (NZ & Thailand)	1kg	\$25.00
Fish & Chips (5 fish & 1kg chips)	1.5kg	\$27.00
Salt & Pepper Squid (NZ & Thailand)	1kg	\$30.00
Prawn Fritters (Aust & Thailand)	900gr	\$31.00
Salt & Pepper Prawns (Thailand)	500gr	\$31.00
Fantail Prawn Cutlet (Thailand)	1kg	\$41.00
Fisherman's Basket (Fish, Squid, Prawns)	1.4kg	\$41.00

DESSERTS

Apple Pie - (Perfect Family Pie)	900gr	\$20.00
Blueberry & Apple Pie (Family Size)	900gr	\$20.00
Mixed Berry Crumble (Family Size)	900gr	\$20.00

EFTPOS Available

BSB 036 103 - ACC 606 798

EFTPOS Available

In Cue on Tuesday 3rd October



St Patricks Church Services - Cue -

October 2023

*Mass/Eucharist
Sunday 15th 8.00am*



*Liturgy of the World with Communion
Sunday 22nd at 8.00am*

Corner of Marshall & Dowley Streets

Please note dates and times are subject to change.

***Pastoral Leader: Cathy Jones
Inland Parish: Meekatharra, Cue & Mt Magnet
Phone: 0482 480 715***

LOGIC PUZZLE

		names					subjects					beers				
		Callie	Emely	Francisco	Karen	Quinton	art	drama	history	metal shop	science	dark lager	pale ale	pale lager	pilsner	stout
salaries	\$35,000															
	\$108,000															
	\$167,000															
	\$200,000															
	\$249,000															
beers	dark lager															
	pale ale															
	pale lager															
	pilsner															
	stout															
subjects	art															
	drama															
	history															
	metal shop															
	science															

CLUES

1. The teacher who taught drama earned a salary of \$167,000.
2. The teacher who earns \$200,000 doesn't like pale ale.
3. Quinton earns less than the pale ale drinker.
4. The teacher with the smallest salary is Emely.
5. The 5 people were the metal shop teacher, the stout drinker, Karen, the teacher who earns \$249,000 and the history teacher.
6. The art teacher doesn't drink pale ale or pale lager.
7. The metal shop teacher earns less than Quinton.
8. The pale ale drinker earns less than the pale lager drinker.
9. Of the dark lager drinker and Quinton, one earns \$35,000 and the other is the history teacher.
10. Francisco is either the pale lager or the pilsner drinker.

WORD SEARCH

S	Z	S	C	R	A	M	B	L	E	N	D	S	W
S	S	S	T	U	E	S	E	L	D	D	U	P	B
D	K	U	C	S	D	K	U	S	E	C	T	O	R
I	C	N	N	T	O	R	C	S	R	N	C	R	A
S	E	T	I	S	C	H	P	I	A	X	A	T	S
C	N	A	C	H	E	I	T	I	U	I	R	L	H
O	E	N	E	R	T	T	G	E	Q	Q	R	Y	A
U	T	S	R	E	D	N	A	L	S	S	O	A	M
T	A	O	P	I	Q	U	E	M	K	T	T	W	E
L	G	M	E	B	S	E	L	L	C	P	S	H	S
A	E	S	S	B	C	A	U	P	I	V	O	T	S
W	L	O	U	U	E	B	D	P	H	S	A	A	I
S	E	C	A	R	E	V	E	A	L	E	D	P	E
C	R	S	P	G	C	D	A	G	H	A	S	T	R

Aghast
Arias
Blends
Brash
Bulks
Carrots
Cosmos
Despite
Disco
Elude
Giant
Grubbier

Heats
Hicks
Hosts
Lurches
Messier
Necks
Outlaws
Pathway
Pause
Piped
Pique
Pivots

Portly
Precinct
Puddles
Quicker
Realms
Relegate
Revealed
Rusts
Sauce
Scramble
Sector
Shames

Silent
Slanders
Squared
Sunset
Suntans
Tests
Thinks

EMERGENCY CONTACTS

EMERGENCY SERVICES - 000
Health Direct - 1800 022 222

NON-EMERGENCY

Police - 131 444

Nursing Post - 9963 0100

If you are feeling unwell, things to consider:

Nursing Post open Mon - Fri 8am to 4pm.

Nearest hospital is 120km away in Meekatharra.

The ambulance service in Cue may require the assistance of volunteers from Meekatharra or Mt Magnet to attend your call.

Cue is a remote community, be proactive, attend to your medical needs ASAP.

NURSING POST



October 2023

RFDS:

Tuesday 3rd

Tuesday 17th

**Please contact the
Nursing Post for
GRAMS.**

Dates were correct at time of print.
Please contact the Nursing Post to
confirm dates (08) 9963 0100.

EMERGENCY SERVICES

Fire & Rescue, Ambulance & Police

In case of emergency please call

000



Meekatharra School of the Air
52 Kempton Street
Bluff Point

2024 Enrolments Now Open



Parents are welcome to contact the school on 9923 5200 for further information.

We look forward to welcoming prospective students and their families into our school community



Our School offers a unique Distance Education programme that is a partnership between the school's professional teaching staff, yourself and your children. Your commitment to your children's education is essential for their success and we will endeavour to provide all the support possible to achieve an excellent education.

for more information, please visit our website
meekatharrasota.wa.edu.au



Meekatharra School of the Air

Kindy Admission 2024

ENROL NOW!

APPLICATIONS
NOW
OPEN

If your child is born between 01
July 2019 - 30 June 2020
(4 years old by 30 June 2023)
you may apply to enrol your child
at MSOTA for Kindergarten 2024



ENQUIRIES - 9923 5200





Support After Suicide

Who do we help?

We support anyone who has been bereaved or impacted by suicide including:

- individuals, families, friends, witnesses
- schools, workplaces and community groups
- first responders and service providers

To find your local **StandBy** site
please use our website

www.standbysupport.com.au

**Many people are impacted by each
suicide death including family
members, close friends, kinship groups,
colleagues and whole communities.**



Mid West & Gascoyne



24/7 Support Needs

1300 727 247

standby.midwestgascoyne@anglicarewa.org.au

www.standbysupport.com.au

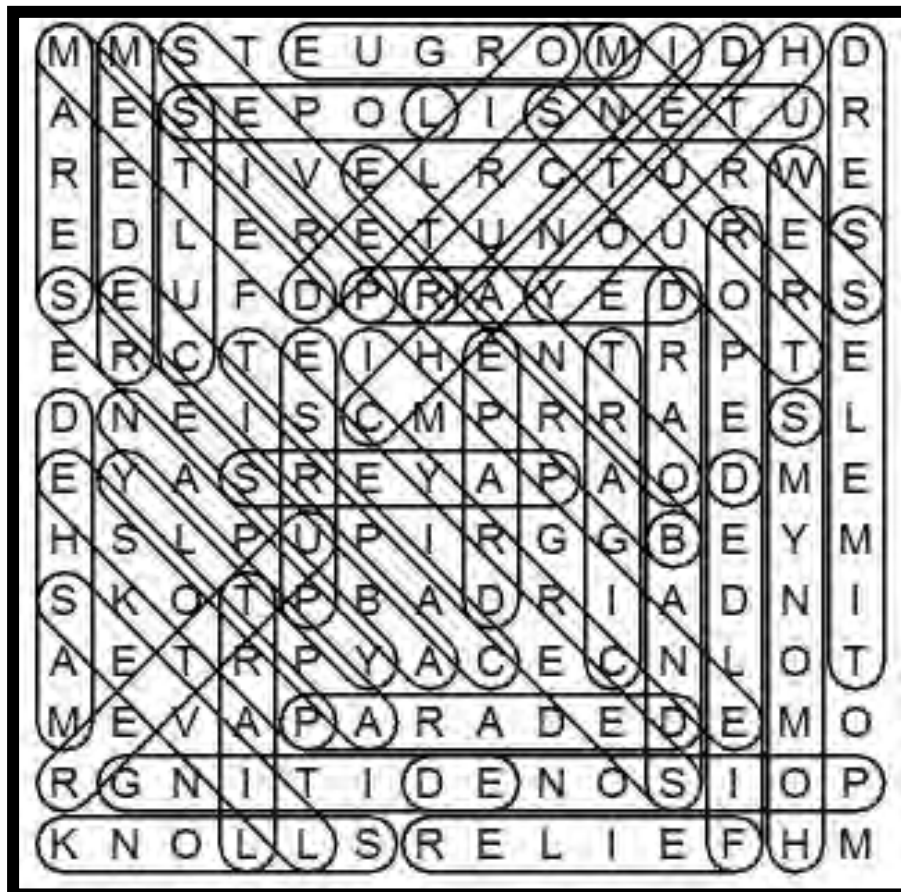


September Puzzle Solutions

SEPTEMBER LOGIC PUZZLE

wake-up call	names	meats	candy bars
6.00am	Kade	pastrami	baby ruth
6.30am	Ryliegh	liverwurst	snickers
7.00am	Keaton	prosciutto	three musketeers
8.00am	Madeline	salami	milky way
8.30am	Zachariah	corned beef	twix

SEPTEMBER WORD SEARCH



October

SUNDAY	MONDAY	TUESDAY	WEDNESDAY	THURSDAY	FRIDAY	SATURDAY
1	2 DOT	3 RFDS Westcoast Seafood	4	5	6	7
8	9	10	11	12	13	14
15 Church Services	16 Memorial Walk	17 RFDS Council Meeting	18	19	20 Stellar Stargazing	21 Stellar Stargazing
22 Church Services	23	24 Special Council Meeting	25	26	27	28
29	30	31 Halloween				



Cue

Community Resource Centre

Your local connection

CRC Opening Hours

Monday

9am to 4pm

Tuesday

9am to 4pm

Wednesday

9am to 4pm

Thursday

9am to 4pm

Friday

9am to 4pm

Saturday

CLOSED

PLEASE NOTE:

You can visit the Cue Heritage Discovery Centre from 10am to 2.30pm Monday to Friday.